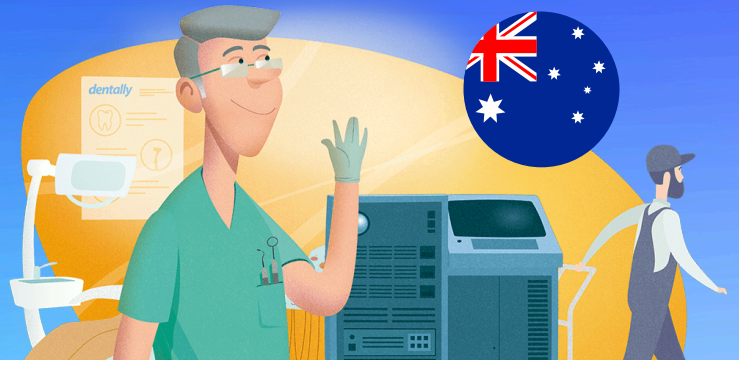


dentally AU Server Migration Checklist



To ensure a smooth transition to our new Sydney-based servers, please complete the following before **21st July 2025**:

- ☐ **Update bookmarks on Chrome:** Update all saved bookmarks to point to the new login page: **app.apac.dentally.com**
- ☐ **Update integrations:** If you use the Dentally API to connect to third party providers (including Zapier), update the endpoint to: **api.apac.dentally.com**
- ☐ **Update Dentally Portal admin dashboard URLs:** If you use the Dentally Portal admin dashboard, update this to: **portal.apac.dentally.com**
- ☐ **Switch to using the Concierge Portal tablet app:** The old iPad app will be discontinued and no longer accessible post server move so make the switch now to avoid disruptions.
- ☐ **Review firewall rules:** Check with your IT provider to update firewall rules to allow all the new URLs.
- ☐ **Notify team members:** Ensure all Dentally users in your practice are aware of the upcoming change.
- ☐ **Prepare for downtime:** Although switch over will take place outside of standard opening hours, Be on standby encase a short period of downtime does occur on 21 July 2025.
- ☐ **Contact support if needed:** Reach out early if you are unsure on the actions needed from you.
- ☐ **Test access after migration:** Log in at the new URL after **July 21st 2025** to confirm access is working to all URL's.

The above actions are required to ensure a smooth transition within Dentally to your new, fast Sydney based servers!