

RCI Full Release notes

Version 127

To benefit from the updates marked with '**AA update required**' you **MUST** update your Acquisition Agent. Keep in mind that your acquisition agent is always backwards compatible and you will still benefit from all other updates listed below.

Need help updating or want to learn more? Visit our [Help Center](#) for details on updating your agent.

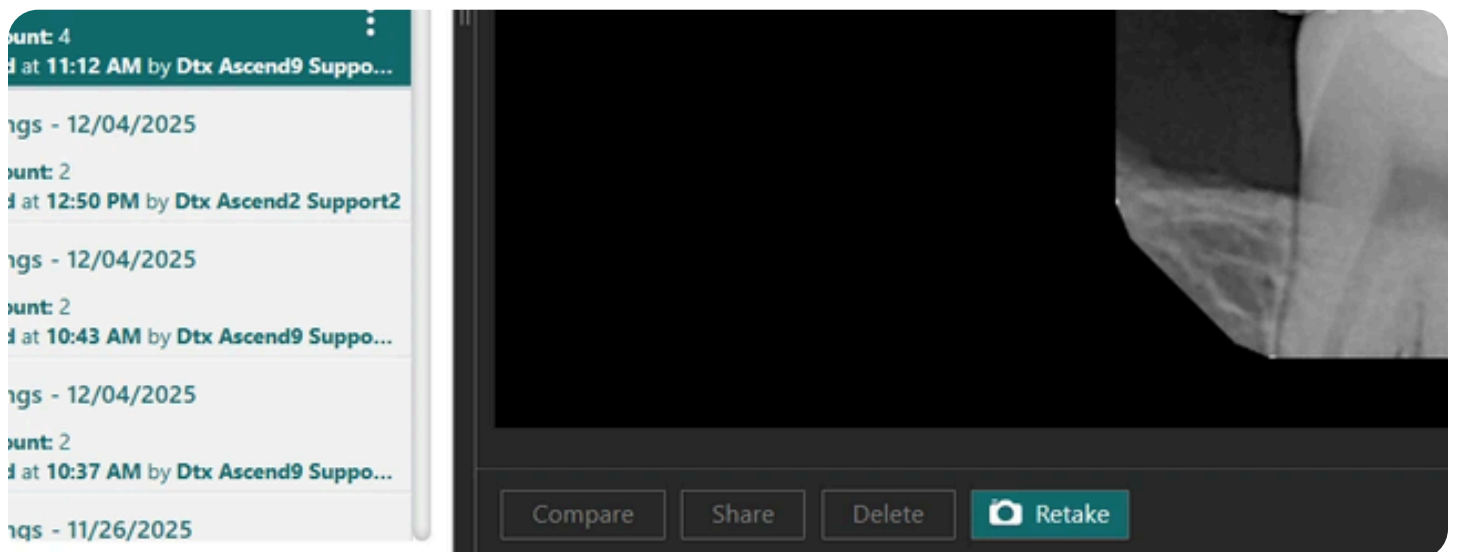
Improvements

'Retake' button enhancements

The appearance and placement of the '**Retake**' button has been adjusted to improve clarity and consistency during image acquisition.

What's changed:

- Updated the button color to green (#126A6D) for better visibility.
- Added a white camera icon to clearly indicate its purpose.
- Updated the button label to white text for improved contrast.
- Moved the Retake button to the final position in the footer to create a consistent and intuitive workflow



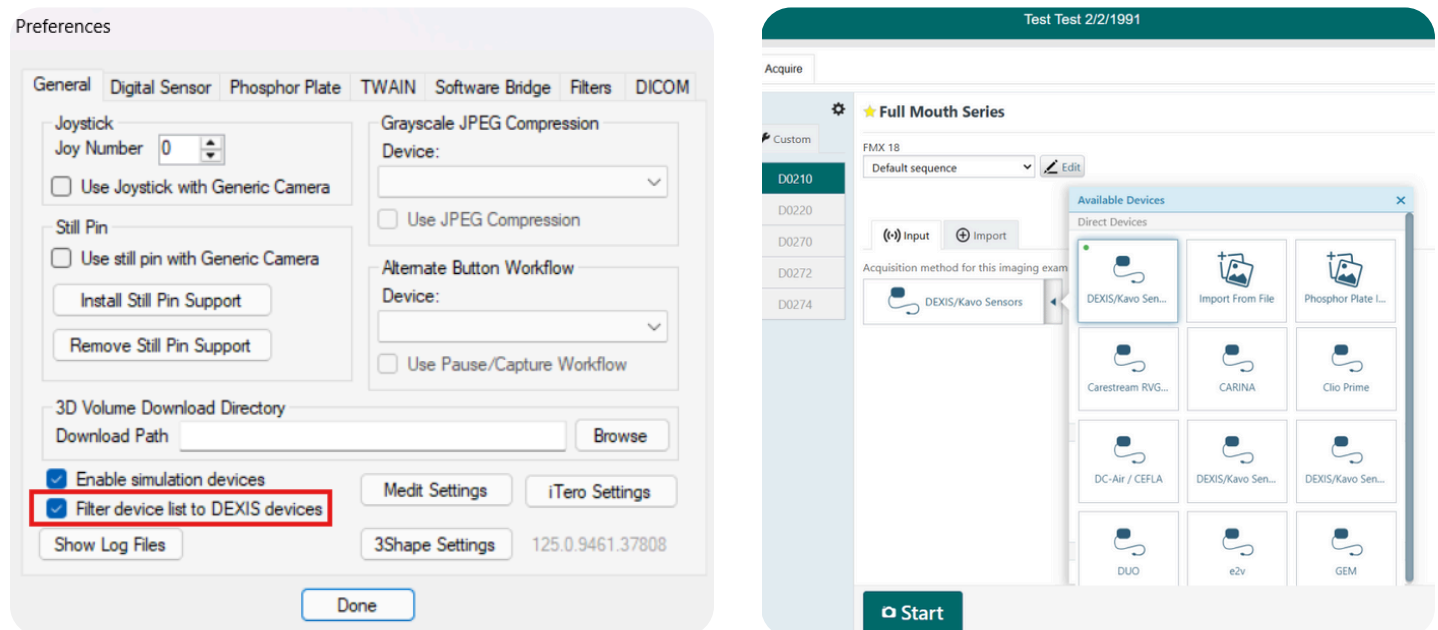
Dexis device filter update

For practices using Dexis devices, the device list now behaves more intuitively when the “**Filter device list to Dexis devices**” setting is enabled.

Whats changed:

- Dexis devices now appear at the top of the device list for quick access.
- All other devices remain available beneath the Dexis options.
- When a device whitelist is configured, non-Dexis options narrow appropriately.

This update maintains Dexis as the preferred default for Dexis users without limiting access to other devices.



Improved AI submission error messages

We have improved the AI error messages to make them shorter, clearer, and easier to understand.

Updated messages are as follows:

PearlService.js

- "AJAX failed to resolve Pearl AI Submission." → "Unable to process Pearl AI submission."
- "AJAX timed out when making Pearl AI submission." → "Pearl AI submission timed out."

These improvements help users understand issues quickly without encountering technical jargon.

Bug Fixes

CAD/CAM & recovery

- Improved reliability when recovering exams and handling mounted/unmounted images.
- Fixed issues causing missing or incorrect template slots.
- Enhanced stability when exporting or reopening exams.

Acquisition & simple mode

- Improved consistency of image capture, thumbnails, and on-screen indicators.
- Fixed issues with incorrect tooth selection, repeated actions, and acquisition freezes.
- Ensured tools, series, and workflows behave as expected during capture.

Image review & AI

- Improved accuracy and visibility of AI indicators and review states.
- Reduced unnecessary network calls and improved performance.
- Fixed issues with offline mode and AI service initialisation.

UI & interaction

- Corrected visual inconsistencies across comparison, exam, fly out, and gallery views.
- Improved layout behaviour in full screen, thumbnails, and image count displays.
- Enhanced overall interface responsiveness and clarity.