

RCI Full Release notes

Version 125

To benefit from the updates marked with 'AA update required' you **MUST** update your Acquisition Agent. Keep in mind that your acquisition agent is always backwards compatible and you will still benefit from all other updates listed below.

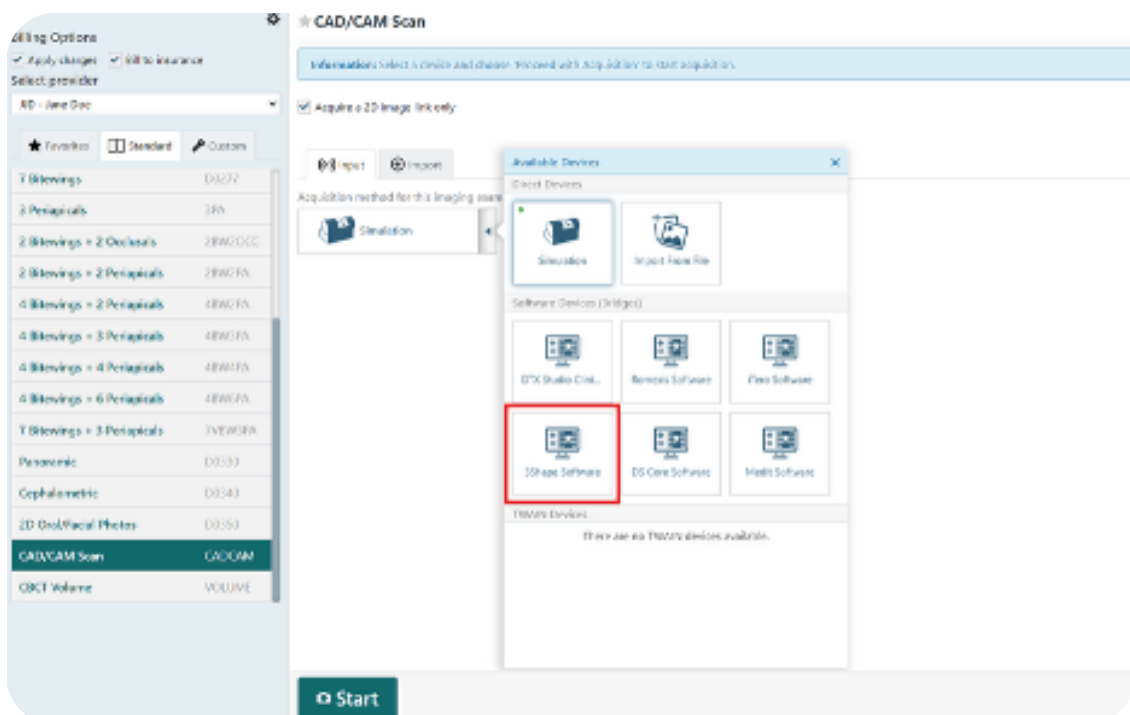
Need help updating or want to learn more? Visit our [Help Center](#) for details on updating your agent.

New Features

Added 3Shape software bridge

AA update required

Connect Dentally Vision directly with 3Shape for smooth, two-way communication between systems – no manual transfers needed - affects Windows machines only.



Five Anterior Positioning in Modality View

We've added a new option to give you more flexibility when reviewing anterior images in Modality View.

You'll now see a checkbox in the Modality View settings called **"Use Five Anterior Positioning."** This option is available for both **Intraoral X-ray** and **Intraoral Color**. By default, Modality View continues to use the classic **3-anterior** layout.

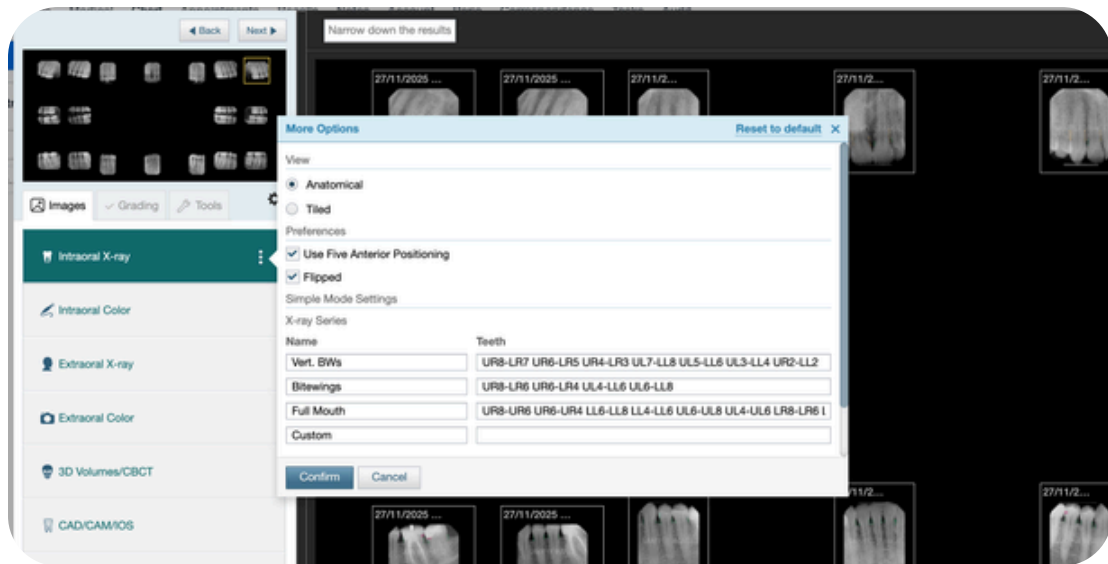
This gives you a more customisable and familiar way to review anterior image sets.

Name	Teeth
Vert. BWs	UR8-LR7 UR6-LR5 UR4-LR3 UL7-LL8 UL5-LL6 UL3-LL4 UR2-LL2
Bitewings	UR8-LR6 UR6-LR4 UL4-LL6 UL6-LL8
Full Mouth	UR8-UR6 UR6-UR4 LL6-LL8 LL4-LL6 UL6-UL8 UL4-UL6 LR8-LR6 I
Custom	

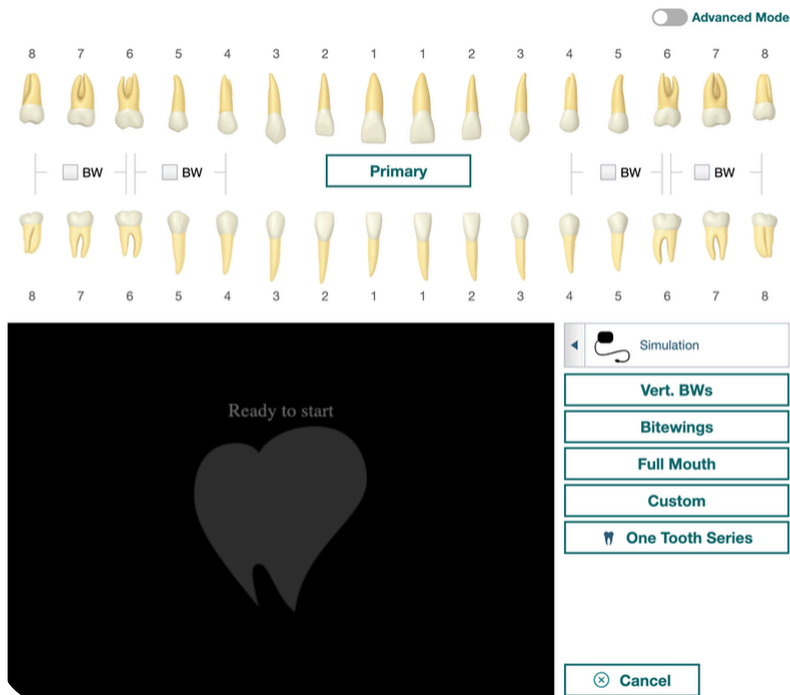
New simple mode

A faster, easier way to capture intra-oral X-rays for everyday use - **please note this does not work with phosphor plate images**- Simple mode gives you:

- Streamlined workflows with clear "Next | Back | Cancel" steps
- Interactive tooth chart - click a tooth or bitewing to start capturing
- Simpler navigation that adapts to your screen size
- Quick procedure buttons - 4 standard ones by default, plus the option to create or edit your own



- Status indicators (red, yellow, green) showing when each image is ready
- Works with intra-oral X-ray devices only (Import from File, Twain, Simulation - excludes phosphor plates)

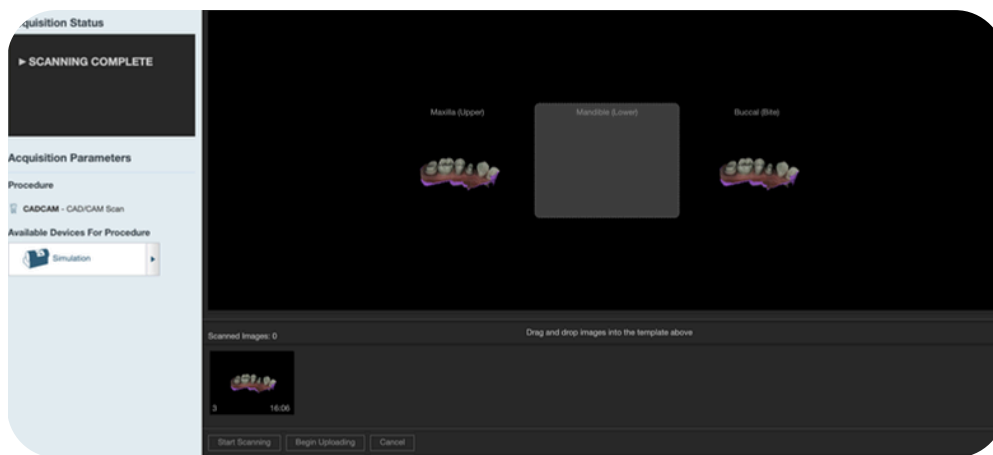


You can switch between simple mode and advanced mode at any time. In advanced mode, the toggle to switch becomes active once a procedure is selected.

Improvements

Improved CAD/CAM auto-mount based on metadata

When you import CAD/CAM images, Dentally Vision now automatically places them in the right template slot (Upper, Lower, etc.) with the correct orientation based on their metadata. You can still manually rearrange them if needed.



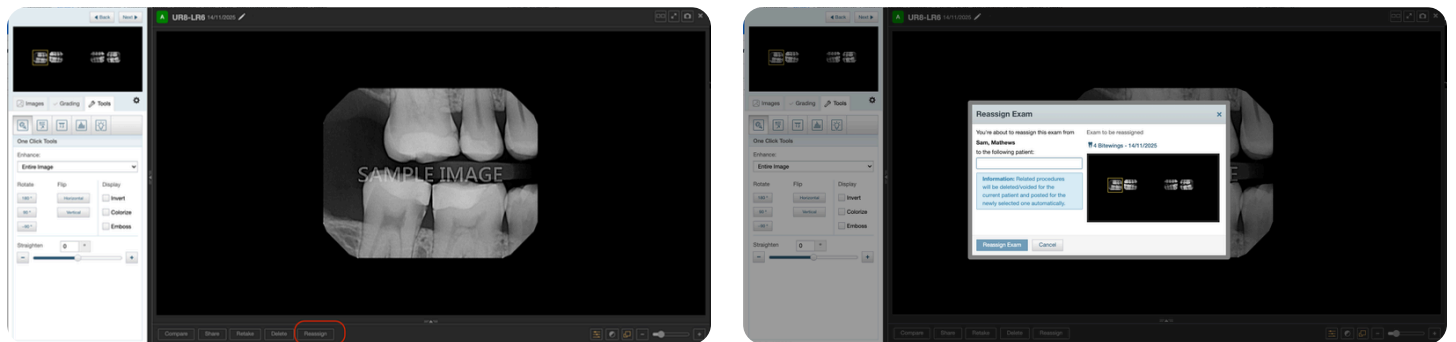
Added 2D direct integration for Owandy pan/ceph

AA update required

Dentally Vision now supports **direct 2D image capture** from Owandy panoramic and cephalometric devices - no more manual uploads - affects Windows machines only.

Enabled image reassignment in modality view

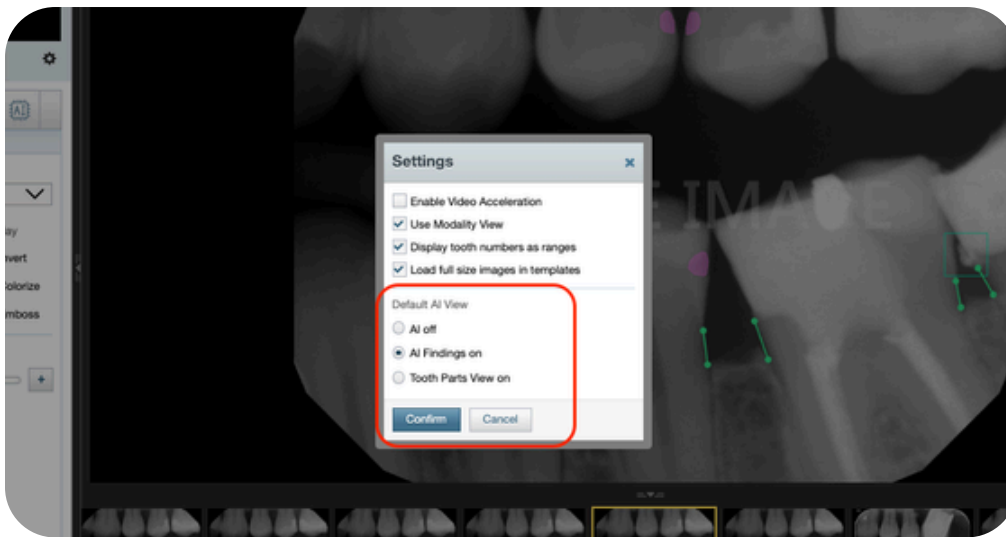
Added a new '**Reassign Patient**' button in single image view. If images were taken under the wrong patient, you can now easily move the whole exam to the correct one.



Extended default AI view mode to all providers

You can now choose how AI appears as a default across all providers, choosing between:

- AI off
- AI Findings on
- Tooth Parts View on



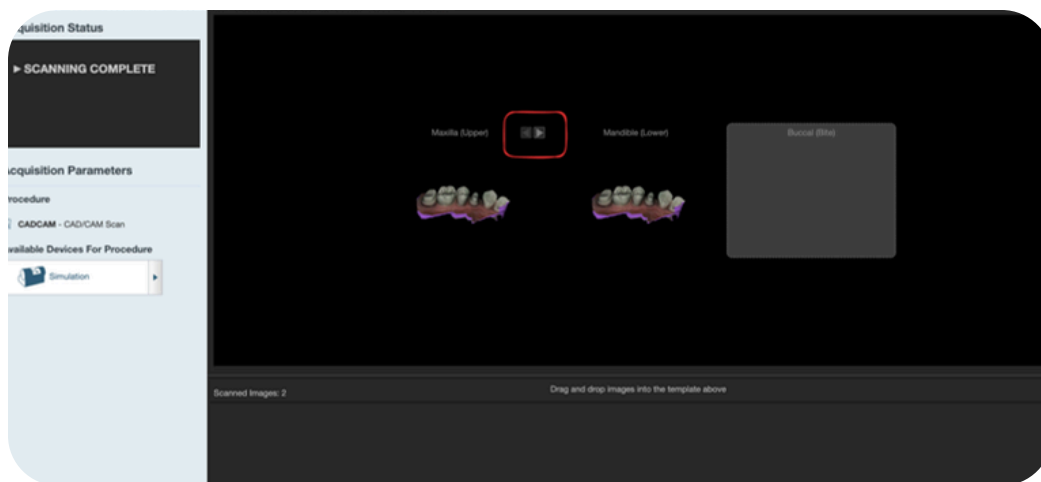
Added full screen mode navigation buttons

While viewing images in full-screen mode, you can now move between images using on-screen navigation buttons.



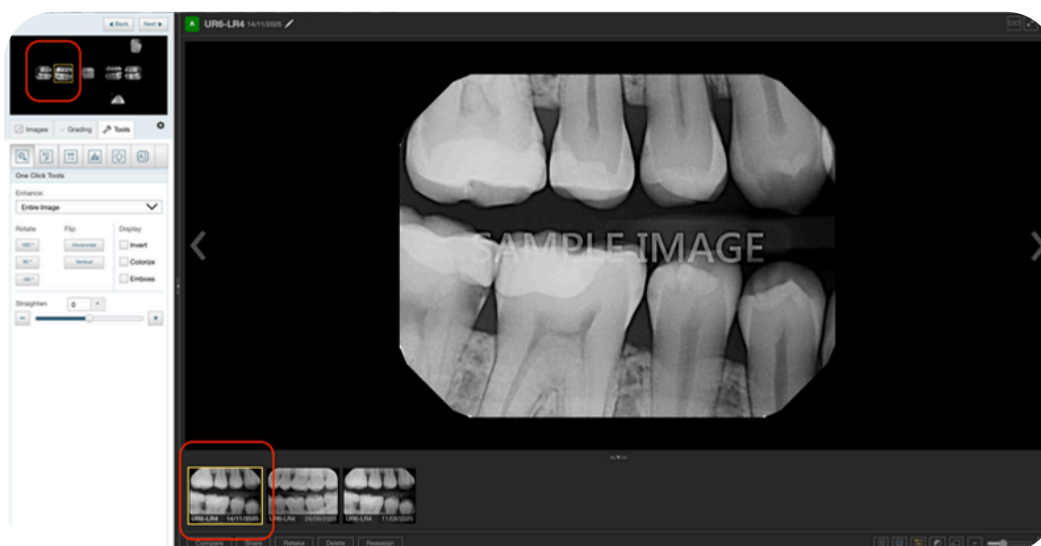
Moved stack arrows inside placeholder in acquire mode

In the CAD/CAM template view, navigation arrows now appear *inside* the image placeholders for a cleaner, easier layout.



Updated gallery view with yellow selection frame

When viewing thumbnails in gallery view, the selected image is now highlighted with a **yellow border**, making it easy to see which one you're working with.



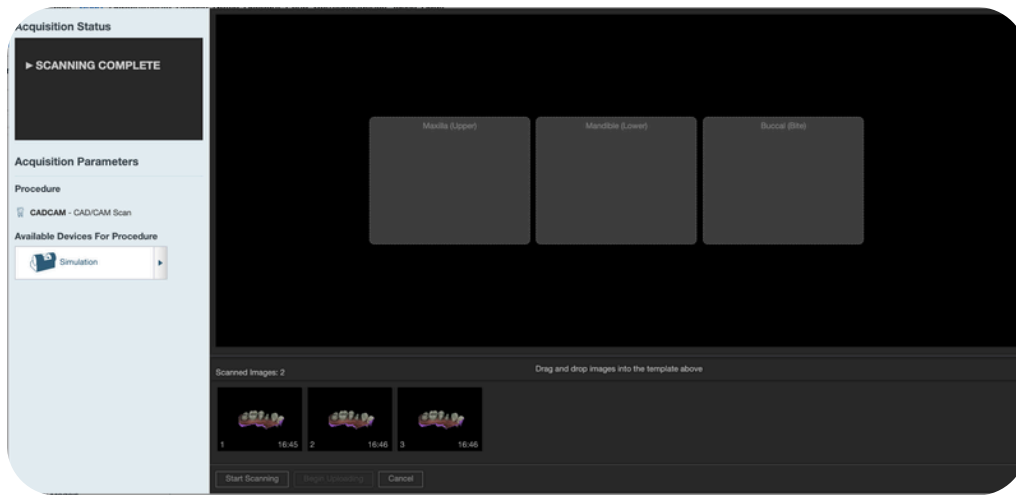
Distributed Medit software bridge INI and DLL files

AA update required

Medit link setup is now easier, the required INI and DLL files are included automatically with the Acquisition Agent - affects Windows machines only.

Centred template slots in CAD/CAM view

The CAD/CAM template layout has been adjusted so that slots are perfectly centred and evenly spaced.



Added start and end parameters to Medit bridge

AA update required

Search performance for Medit has been improved, start and end time filters now make searches faster and reduce server load, even across different time zones - affects Windows machines only.

Medit File Format Updated to STL

AA update required

We've updated how files are retrieved from Medit to support a more streamlined workflow. Medit files previously imported in **PLY** format will now be retrieved as **STL** files. STL files are widely supported across clinical and CAD/CAM workflows, helping ensure greater compatibility and smoother downstream processing.

Improve Accept/Reject Interaction for DV AI Results

This improvement makes the UI interaction area larger for the Accept/Reject functionality which makes it easier to interact with for the user.

Chrome Local Network access permission

Support added for Acquisition Agent connectivity

Simple Mode enhancements

- Improved error messaging
- Added the ability to enable image enhancement